

Collaboratively implementing the Mayo-Portland Adaptability Inventory (MPAI-4) is helping to optimize outpatient stroke rehabilitation



Ataman, R., Thomas, A., Kengne Talla, P., Auger, C., McKerral, M., Frédérique Poncet, Wittich, W., and Ahmed, S. Evaluating the collaborative implementation of the Mayo-Portland Adaptability Inventory in three rehabilitation settings in Québec: Preliminary results from a mixed methods study

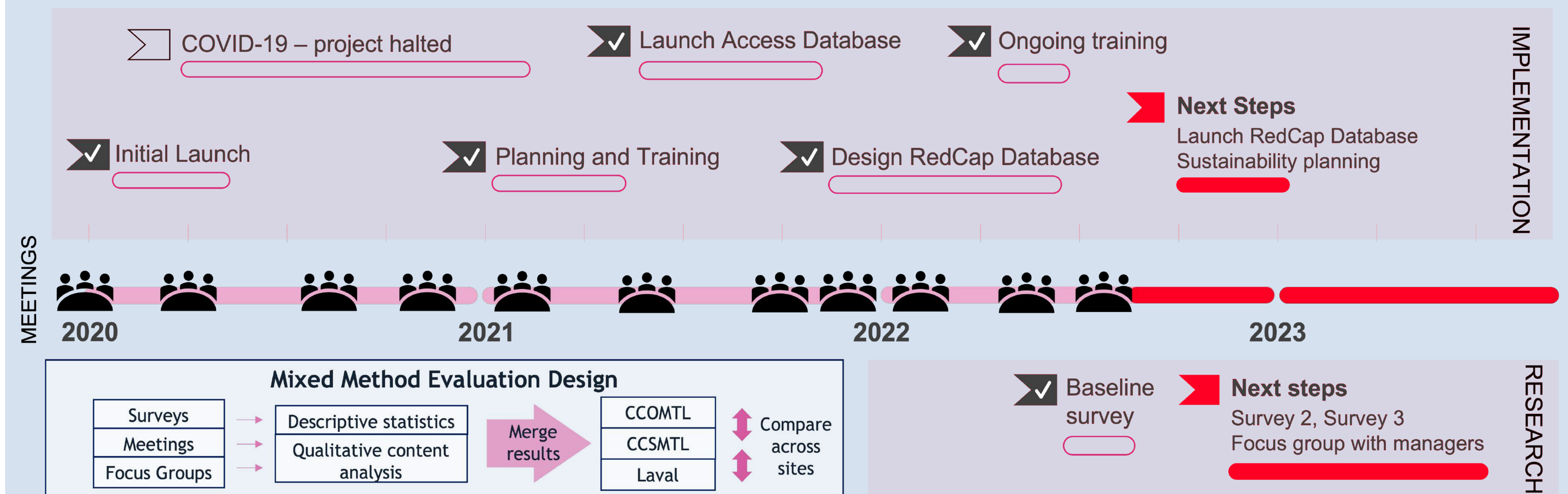
Introduction

- Mayo-Portland Adaptability Inventory - version 4 (MPAI-4) comprehensively describes and evaluates stroke survivors in rehabilitation¹
- In 2018, the MSSS mandated the use of the Participation Index of the MPAI-4 in outpatient stroke rehabilitation²

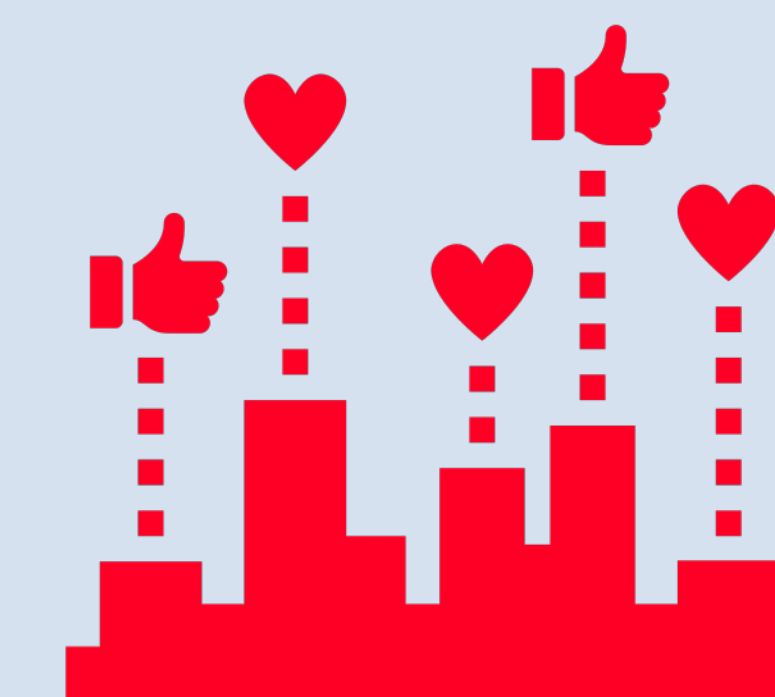
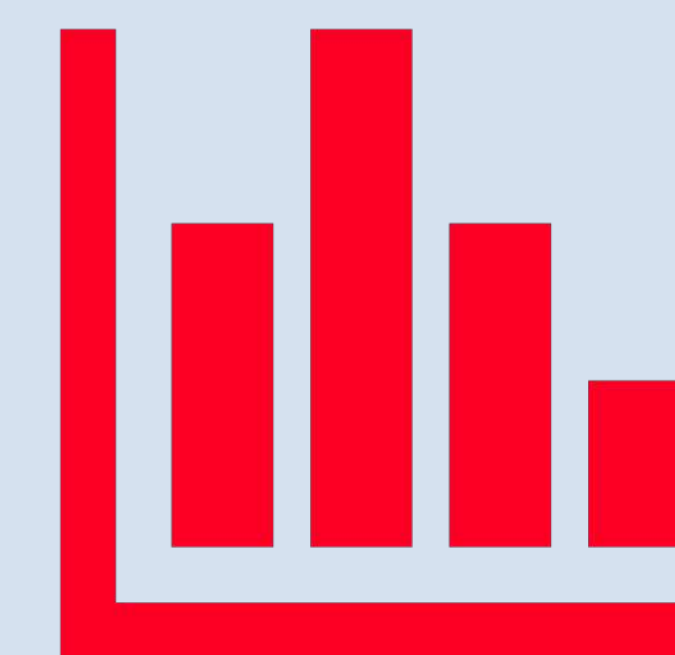
Objective

To evaluate the process and implementation success of the MPAI-4 in outpatient stroke rehabilitation programs at CIUSSS du CCOMTL, CIUSSS du CCSMTL and CISSS de Laval

Methods and Process



Impacts



Stakeholders

Établissements

Centre intégré de santé et de services sociaux de Laval



Centre intégré universitaire de santé et de services sociaux du Centre-Ouest-de-l'île-de-Montréal



Centre intégré universitaire de santé et de services sociaux du Centre-Sud-de-l'île-de-Montréal



Research institutions



Funding



References

1. Ataman, R., Thomas, A., Roberge-Dao, J., McKerral, M., Auger, C., Wittich, W. Kengne Talla, P., Boychuck, Z., and Ahmed, S. Measurement Properties of the Mayo-Portland Adaptability Inventory (MPAI-4) and related measures: A Systematic Review. *Submitted to the Journal of Clinical Epidemiology, May 10th 2022*
2. Ministère de la Santé et des Services sociaux (MSSS). Continuum de services pour les personnes à risque de subir ou ayant subi un accident vasculaire cérébral 2018: Québec. p. 1-89.